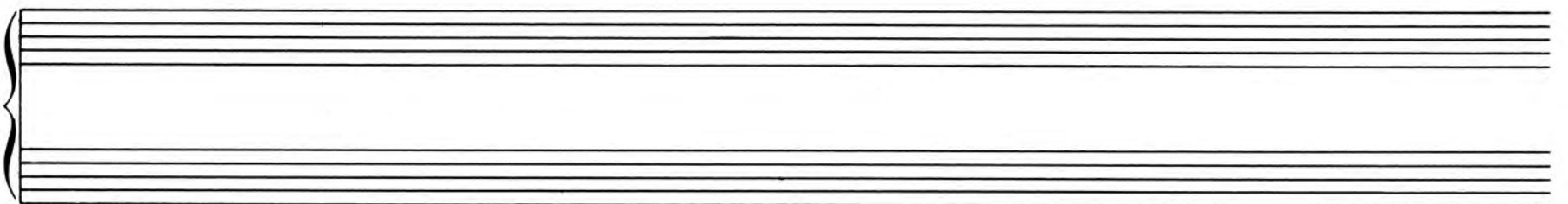
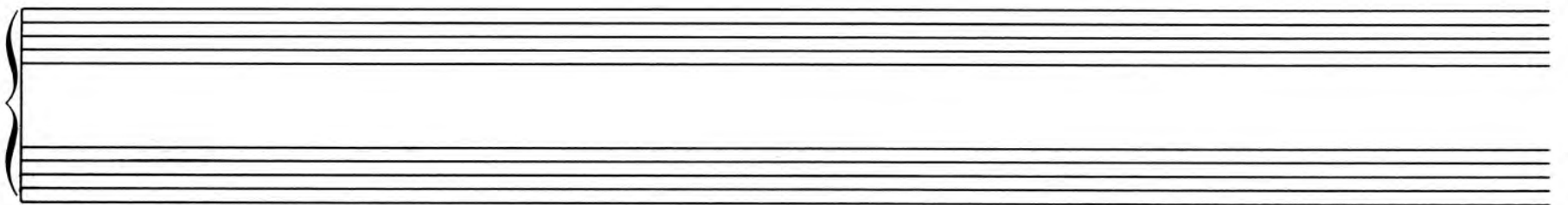


OSVALDO LACERDA

"PONTEIO N. 1"

PRA PIANO  
(1955)



# "PONTEIO N. 1"

OSVALDO LACERDA  
(1955)

cômodo (♩ = 100)

PIANO

First system of piano music. The right hand starts with a *mf* dynamic and a *p* dynamic. The left hand starts with a *mp* dynamic. The tempo is *cômodo* (♩ = 100). The music is in 2/4 time and features a complex harmonic structure with many accidentals.

Second system of piano music. The right hand continues with a *mf* dynamic. The left hand continues with a *mp* dynamic. The music is in 2/4 time and features a complex harmonic structure with many accidentals.

Third system of piano music. The right hand continues with a *mf* dynamic. The left hand continues with a *mp* dynamic. The music is in 2/4 time and features a complex harmonic structure with many accidentals. The system ends with a *rall.* marking.

Fourth system of piano music. The right hand continues with a *mf* dynamic. The left hand continues with a *mp* dynamic. The music is in 2/4 time and features a complex harmonic structure with many accidentals. The system starts with a *a tempo* marking.

Fifth system of piano music. The right hand continues with a *mf* dynamic. The left hand continues with a *mp* dynamic. The music is in 2/4 time and features a complex harmonic structure with many accidentals.

Handwritten musical notation for the first system, consisting of a grand staff with treble and bass clefs. The music features a melodic line in the treble clef and a supporting bass line. A handwritten annotation *poco string. a tempo* is written above the treble staff, and *rit.* is written above the bass staff. The key signature has one flat, and the time signature is 4/4.

Handwritten musical notation for the second system, continuing the grand staff. The notation includes various rhythmic values and accidentals. A handwritten annotation *a tempo p* is written in the beginning of the system.

Handwritten musical notation for the third system. The music continues with complex rhythmic patterns. A handwritten annotation *cresc.* is written above the bass staff.

Handwritten musical notation for the fourth system. The music features a dynamic marking *f* (forte) in the beginning of the system.

Handwritten musical notation for the fifth system. The music includes a dynamic marking *dim. poco a poco* written above the bass staff.

Handwritten musical notation for the sixth system, concluding the page. The notation continues the melodic and harmonic development of the piece.

*rall.* *a tempo*

*delicato*  
*mp*

*um pouquinho mais devagar*  
*pochiss. rall.* *mp* *3*

*riten.* *a tempo, ma rit.* *pp* *mf*

*rall.* *Ped.* *rall.*

2'20

S. Paulo, novembro de 1955